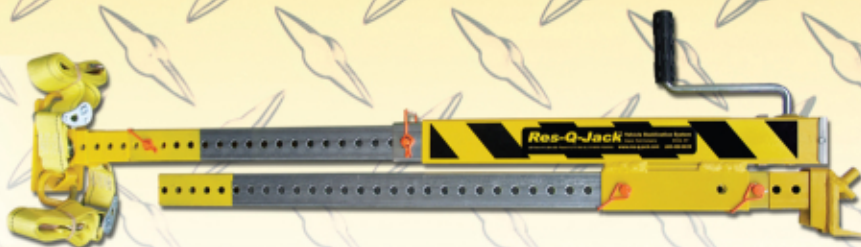


# The **LIGHTEST** Lifting Strut. Period.

**Res-Q-Jack®**  
Serious Rescue Tools



**LIFT  
ON-SITE**

**LIFT  
ON-BOARD**

**LIFT  
ON-DEMAND**

**Res-Q-Jack, Inc.**

Stabilization, Extrication, Lifting & Rescue Solutions

Call 800-466-9626

[www.Res-Q-Jack.com](http://www.Res-Q-Jack.com)

**X-STRUT™**  
New for 2008  
See Inside



# Strut Products

Res-Q-Jack® strut products have evolved and expanded into the most complete line of versatile jacks & struts available today. We build the equipment the way we do because we feel that what we offer is the best design possible. We continue to test, evolve and refine the products with valuable feedback from you, our customers.

After all, we are both in the business of protecting and saving lives.

**Call**  
**800-466-9626**  
for  
**Free Hands-On**  
**Demo**

## Get FULL HANDS-ON TRAINING

Anyone that purchases a set of Res-Q-Jack® struts will get **FULL IN-SERVICE TRAINING** at no extra charge by one of our many representatives around the world! The best training for the best rescue tools.

Purchase or no purchase, you are always welcome to visit **Stabilization University®** to take part in our **ROLL-EX®** program in Elmira, NY for a great day of hands-on work with our equipment. You will not only learn the best passenger vehicle stabilization and lifting techniques available but you will quickly appreciate how well Res-Q-Jack® integrates with extrication allowing for the fastest possible patient access and extraction in the safest manner that we know of.

## 4 Point Deluxe Kit - RJ3-4PTX



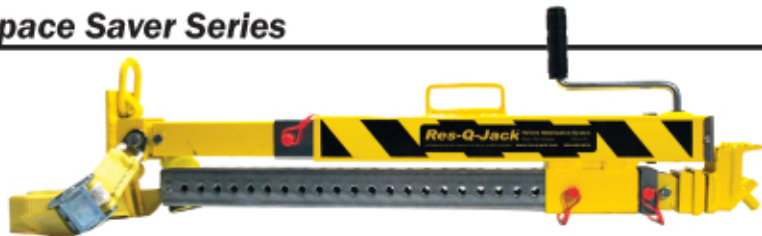
- (2) Jack Stands and (2) Adjustable Stands.  
Includes: (4) end fittings, (2) straps,  
(4) SLING8 - 4' chain w/ 8" j. grabs, mini j. t-gr.70,  
(4) Cluster w/ grabs,t. & mini j - gr.70,  
(3) 15' ratchet strap w/ snap hooks ,  
(2) 27' ratchet strap with 3/8" chain ends,  
(2) Hybrid wedges - Plastic core/PT wood skin,  
(1) Chain 3/8" x 16' grade 80 chain w/ grab hooks,  
(2) Stake1 - 1" dia. Picket w/ collars - 4' long,  
(2) Stake2 - 3/4" dia. Stake w/ head - 20" long

## RJ3 Series - The Standard in Lifting Struts



The Res-Q-Jack® RJ3 Struts are the standard in serious stabilization and lifting struts. These are the solutions that are being used by hundreds of departments and rescue squads. This workhorse collapses down to a 49.5" without any disassembly. Fully extended, it stretches to over 107"! - 4,000lb. Column WLL @ 6'

## Space Saver Series



The Res-Q-Jack® Space-Saver® Struts are the ultimate in stabilization and lifting struts. They are the answer to the common problem – storage. Without compromise to the strut working load, all the features of Res-Q-Jack® that have made this rescue tool a success have been packed into this workhorse that collapses down to an amazing 36.5" without any disassembly! Fully extended, it stretches to over 102"!

## Specialty Series - Stainless



Your environment may demand strut products with special material construction for corrosion resistance or other requirements. Res-Q-Jack® offers stainless steel struts that are extra tough and durable. This strut collapses down to a 54" without any disassembly. Fully extended, it stretches to over 93"!



# Strut Products & Accessories

## Heads



## Straps, Chains & Hooks



## Wedges



## New for 2008 - X-Strut



New for 2008, X-Strut is an all-in-one universal strut that is strong enough for shoring, fast enough for extrication, and light enough for anyone. X-Strut utilizes Quikjack® no-nonsense add-on jack technology to transform from shoring strut to lifting strut in seconds! This is a pin-free, confusion-free jack attachment to strut.

## Specialty Series - Timber Strut



We understand that your budget may limit your selection of stabilization equipment to a 4x4 timber type shore. We also understand that the available options for such equipment leave a little more to be desired. With that in mind, we set out to build the best in 4x4 vehicle stabilization accessories. You be the judge of the outcome.

## Custom Struts etc. - Have it Your Way!

We understand that there may be a desire to have things just a little bit different or even considerably different. With this in mind, we want to be sure you know that we will build equipment to suit your specific needs. These options include, but are not limited to tubing extension stops, base design, stop pin selection, extension length, collapsed dimension, number of telescopic sections, etc.

## Deep Cut Rescue Saw

**Amazing Evolution  
230 Xtreme Steel  
Cutting Saw with a 9"  
diameter TCT blade.**



- ▶ Designed to cut steel, aluminum, and stainless steel without heat, burrs or coolant. Also cuts wood.
- ▶ Powerful 1750 watt motor copes with the heaviest of work. Earth grounded and doubly insulated.
- ▶ 3-1/4" Depth Cut! & thickness 1/2".
- ▶ Long life blade cuts up to 260' of 1/4" steel plate.
- ▶ Includes blade guard, trigger switch, operators manual, goggles, hearing protection and carry case.
- ▶ High quality construction with 12 month warranty.



**Call for Free Hands-On Demo - Free DVD & Catalog**



## Other Strategic Applications

Res-Q-Jack® tools are versatile and can be used in many other environments surrounding rescue, construction, aircraft, forestry and other unique applications. Below is a partial representation of our "other" application resource library. For a host of other applications, see [www.Res-Q-Jack.com](http://www.Res-Q-Jack.com).

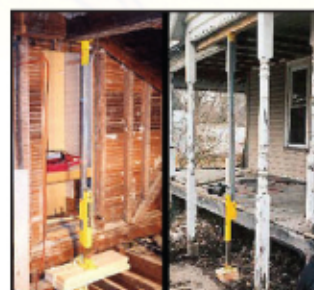
### Forcible Entry



### Confined Space/Tri-Pod



### Structural / Shoring



### Ramming / Displacement



## The Right Tool for the Job!

**Versatility** - Our tools are designed with maximum utility in mind. All pieces, including bases, ends, and extensions are interchangeable, adjustable or removable.

**Powerful Jack** - The jack stands incorporate a powerful smooth acting jack that will accomplish fine tuning of the stabilization with no jumping!

Create a **short stand from a long stand**. No need to buy multiple stands.

**Strength** - We use only 2-1/4" and 2" square steel tubing (1/8" wall) on our standard RJ3 extension pieces.

**Knowledge** - We actually know the physics behind the problem.

When it comes to passenger vehicle stabilization, there is nothing we know of that the Res-Q-Jack® equipment can't do that the competition can. However, there are a host of things it can do that the others can't.

### Lifting Strut Comparison Matrix

Feature/Spec.	Res-Q-Jack	Composite Strut
Weight	LIGHTEST LIFTING STRUT	HEAVY WITH ADD-ON JACK
Impact Resistance	EXCELLENT	POOR
UV Resistance	EXCELLENT	POOR
Abrasion Resistance	EXCELLENT	POOR
Fire Resistance	EXCELLENT	POOR
Bearing Strength	EXCELLENT	POOR
Splinters	NO	YES
Res-Q-Jack material composition - Steel, Stainless, Aluminum		



# Strut Products & Accessories

## Heads



## Straps, Chains & Hooks



## Wedges



## New for 2008 - X-Strut



New for 2008, X-Strut is an all-in-one universal strut that is strong enough for shoring, fast enough for extrication, and light enough for anyone. X-Strut utilizes Quikjack® no-nonsense add-on jack technology to transform from shoring strut to lifting strut in seconds! This is a pin-free, confusion-free jack attachment to strut.

## Specialty Series - Timber Strut



We understand that your budget may limit your selection of stabilization equipment to a 4x4 timber type shore. We also understand that the available options for such equipment leave a little more to be desired. With that in mind, we set out to build the best in 4x4 vehicle stabilization accessories. You be the judge of the outcome.

## Custom Struts etc. - Have it Your Way!

We understand that there may be a desire to have things just a little bit different or even considerably different. With this in mind, we want to be sure you know that we will build equipment to suit your specific needs. These options include, but are not limited to tubing extension stops, base design, stop pin selection, extension length, collapsed dimension, number of telescopic sections, etc.

## Deep Cut Rescue Saw

**Amazing Evolution  
230 Xtreme Steel  
Cutting Saw with a 9"  
diameter TCT blade.**



- ▶ Designed to cut steel, aluminum, and stainless steel without heat, burrs or coolant. Also cuts wood.
- ▶ Powerful 1750 watt motor copes with the heaviest of work. Earth grounded and doubly insulated.
- ▶ 3-1/4" Depth Cut! & thickness 1/2".
- ▶ Long life blade cuts up to 260' of 1/4" steel plate.
- ▶ Includes blade guard, trigger switch, operators manual, goggles, hearing protection and carry case.
- ▶ High quality construction with 12 month warranty.



**Call for Free Hands-On Demo - Free DVD & Catalog**

# Res-Q-Jack®

Serious Rescue Tools



Res-Q-Jack Space Saver - Lifting Strut - From 36.5" to 103"+!

"Where we ran into problems at extrication scenes, it always seemed that Res-Q-Jack® had the ability to take the request, take that challenge, and come up with a solution."



**Ron Moore**  
University of Extrication  
Firehouse Magazine

## The Most Versatile Lifting Struts



Half Lift



Side Lift



Roof Lift



Displacement



Structural



Confined Space

## Raising the Bar in Stabilization!



"We recently bought the RES-Q-JACK® Stabilization Struts. The biggest advantage we found with RES-Q-JACK® is the lifting capability which is built into the strut, so no other parts are needed to accomplish the lifting task. This is a great asset for our patients and department."

**Tommy Bettes**  
Captain  
Oceanside Fire Department

# Res-Q-Jack®

Serious Rescue Tools

133 Philo Road West  
Elmira, New York 14903